

WIR IV

for percussion & audio playback
by Niels Rønsholdt 2006

WIR IV

WIR IV

for percussion & audio playback
by Niels Rønsholdt 2006

PERFORMANCE NOTES

INSTRUMENTS

Right hand:

Steel block / Anvil 1
Damped lightly by cloth.
Struck by the campane hammer of
right hand.

both hands:

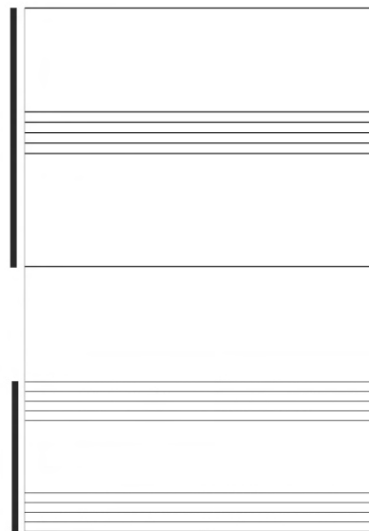
Tubular Bells
1 1/2 octaves (C-F).
Additional low B-flat is required.
Two ordinary campane hammers are
needed, one for each hand

Left hand:

Steel Block / Anvil 2
Struck simultaneously by
two hard mallets.

AUDIO PLAYBACK

The audio playback consists of sine tone chords. They are notated (in approximate pitches) on two staves below the percussion part. The audio file (stereo) can be downloaded from www.nielsroensholdt.dk/wir together with a max-MSP playback patch for performance use which includes a visual metronome in order to simplify the coordination.



Pesante Estremo (♩=42)

Steel bl./
Anvil
[damped]

Tubular
Bells

Steel bl./
anvil

ff sempre

(LH: rampone hammer)

Audio
Playback

(simile
sempre)



anv.
(damp)

T.B.

anv.

ff sempre

LH: Hard Mallets

audio

3
 > >

anv. (dmp)

T.B.

4:3

anv.

LH: Camp. Hammer

audio



3
 > >

anv. (dmp)

T.B.

2

[LH]

LH: 2 hard mallets

anv.

audio

Handwritten musical score for the first system, consisting of four staves:

- anv. (dmp):** Anv. (dmp) staff with a triplet of eighth notes at the beginning and various notes with accents and slurs.
- T.B.:** T.B. staff with a slur over the first two notes, a slur over the next two notes, and a slur over the final two notes.
- anv.:** Anv. staff with a triplet of eighth notes at the beginning and various notes with accents and slurs.
- audio:** Audio staff showing a piano accompaniment with chords and individual notes.



Handwritten musical score for the second system, consisting of four staves:

- anv. (dmp):** Anv. (dmp) staff with various notes and accents.
- T.B.:** T.B. staff with a slur over the first two notes, a slur over the next two notes, and a slur over the final two notes.
- anv.:** Anv. staff with various notes and accents. Includes the handwritten instruction "LH: campane hammer" and a bracketed "2" with a slur over the final two notes.
- audio:** Audio staff showing a piano accompaniment with chords and individual notes.

Handwritten musical score for T.B. and audio.

Top System:

- Staff 1: *aw. (dmp)* (empty)
- Staff 2: *T.B.* (Tenor Bass). Contains a melodic line with notes, a slur over two notes, and a fermata. Includes the instruction *[RH] -2-* and *l.v. al fine*.
- Staff 3: *av.* (empty)

Bottom System:

- Staff 4: *audio*. Contains a complex rhythmic pattern of vertical lines.
- Staff 5: *audio*. Contains a complex rhythmic pattern of vertical lines.
- Staff 6: *audio*. Contains a complex rhythmic pattern of vertical lines.

Annotations:

- (CODA)* is written above the first measure of the bottom system.
- Handwritten accents (*>*) are placed above several notes in the bottom system.

Nick Konstant
2006